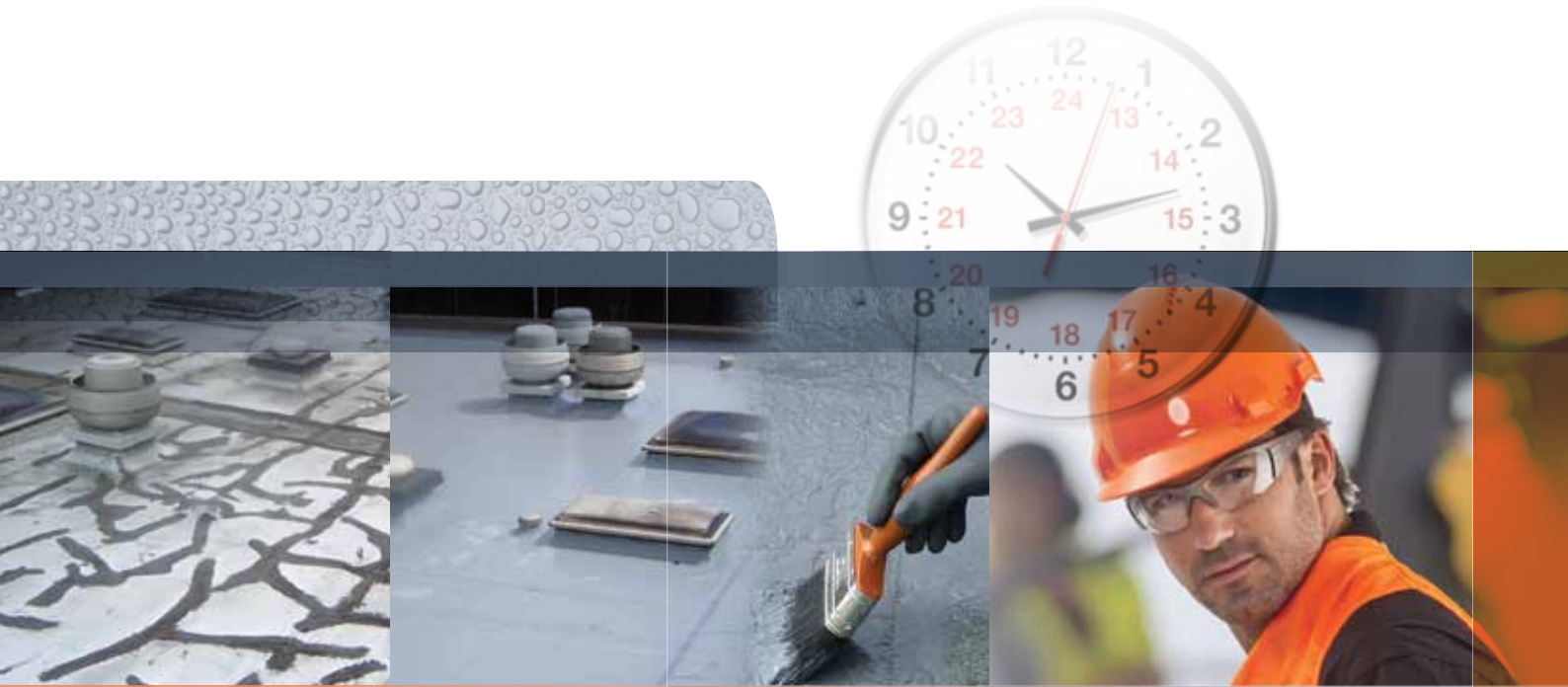
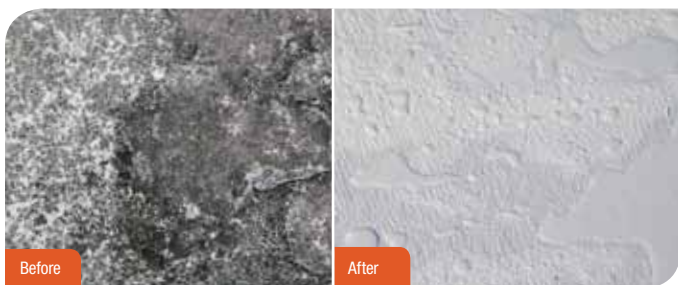


3M™ Scotchkote™ Roofing
Liquid Membrane Systems



The mat free **solution**
one day, time saving, liquid roof
installation





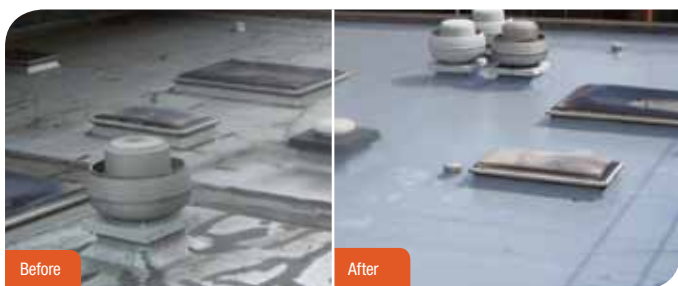
- Waterproof in 1 hour (@ 20°C)
- 2 hour overcoating time (@ 20°C)
- Totally seamless finish - No joints to potentially leak
- Cold applied - Flame free
- Simple brush / roller application



- Complex shapes easily waterproofed
- No reinforcing mat or fleece required
- Liquid reinforcing system for detailing
- Simple duct tape bond breaks
- Fire resistant - Tested to BS476 Part 3:2004



- Reduce labour time by 33-80%
- Low solvent - 100 g/litre
- Low temperature application
- Water vapour permeable
- Non-bituminous



- Roof furniture easily incorporated
- Long term system - 25 year Life to First Maintenance
- Choice of colours
- Low odour - Minimal disruption to building function
- Flexible - Accommodates normal structural movement



No more... hassle with detailing



No more... reinforcing mat



No more... lengthy cure times



No more... strong odours



3M™ Scotchkote™ Urethane Roof Coating SD 650

Property	Value
Colour	Light Grey, Mid Grey, Dark Grey
Ratio	1:1 By volume
Weight Solids	91%
Volume Solids	88%
V.O.C (As Supplied)	100g/litre
Coverage Rate	2 coat system at 1.5 litre/sqm wet. (0.75 litre/sqm per coat)

Drying & Cure times at 20°C (68°F)

Usable Life	1 hour
Touch Dry/Waterproof	1 hour
Hard Dry	2 hours
Minimum Overcoating	2 hours
Maximum Overcoating	Indefinite provided surface is clean & free from contamination

Performance Data

Abrasion Resistance	37mg weight loss per 1000 cycles - 1kg load - CS17 wheel (ASTM D4060)
Water Vapour Permeability	5.367×10^{-4} perm.cm (ASTM D1653)
Tensile Strength	20Mpa (ASTM D638)
Elongation	230% (ASTM D412)
Tear Strength	55N/mm (ASTM D624)
Shore A Hardness	85 (ASTM D2240)
Youngs Modulus of Elasticity	35Mpa (ASTM D378-10)
Fire Performance BS476 Part 3:2004	Spread of Flame EXT.FAA & S.AA Fire Penetration EXT.FAA & S.AA

“I want a hassle free system that’s quick and easy to apply”



Save... time



Save... money



Save... effort



Save... materials

“Time is money”

3M™ 1900 Duct Tape

Ideal for bridging movement joints on roof substrates and roof sheets. Use to bridge joints, overlaps, seams and repairs before application of chosen 3M™ Scotchkote™ Liquid Roof Membrane System.

- High grab adhesive
- Can be applied at temperatures down to -20°C
- Available in 50m rolls x 75mm (3") wide
- Easy to use

3M™ Scotchkote™ Urethane Roof Detailing Compound SDR 655

Property	Value
Colour	Dark Grey
Ratio	1:1 By volume
Weight Solids	91%
Volume Solids	88%
V.O.C (As Supplied)	100g/litre
Coverage Rate	0.1 litre per linear metre of tape (13cm wide)

Drying & Cure times at 20°C (68°F)

Usable Life	1 hour
Touch Dry/Waterproof	1 hour
Hard Dry	2 hours
Minimum Overcoating	2 hours
Maximum Overcoating	Indefinite provided surface is clean & free from contamination

Guide to Application

Surface Preparation

3M™ Scotchkote™ Urethane Roof Coating SD 650 roof membrane system should only be applied to structurally sound roof areas. On flat roofs which have been dressed with large or medium size chippings, these must be removed prior to application. A mechanical flail should be used to remove the chippings and then the area swept down to remove all loose dirt and dust. On asphalt roofs, blisters should be cut out and the void filled with polymer concrete screed. On felt roofs, severe blisters should be cut open and bonded flat.

Any areas of moss or lichen growth should be treated with a proprietary fungicidal wash in accordance with the manufacturer's instructions.

Any surface to be protected must be clean, dry and firm, and this is especially important with metallic, glass or plastic surfaces.

3M™ 1900 Duct Tape should be applied over any areas subject to movement (such as cracks, joints, overlaps, seams, poor fitting flashings or valley gutter joints etc). The tape should be laid over the joint and pressed firmly onto the surface, ensuring the edges of the tape are firmly adhered. These areas should be stripe coated with 3M™ Scotchkote™ Roof Detailing Compound SDR 655.

Application Procedures

Priming

Bituminous and Felt Surfaces: No primer normally needed.

Wood, Concrete and Asbestos Surfaces: Surfaces should be primed with 3M™ Scotchkote™ Urethane Primer FB 856. Detailed application procedures are given on the product data sheet.

Previously Painted Surfaces: Surfaces should be primed with 3M™ Scotchkote™ WB Epoxy Primer GP 830. Detailed application procedures are given on the product data sheet.

Copper and Ferrous Metal Surfaces: Surfaces should be primed with 3M™ Scotchkote™ Epoxy Primer MC 135. Detailed application procedures are given on the product data sheet.

For coverage rates of primers refer to the appropriate technical data sheet.

Mixing

The product is a two component material comprising Part A (Base) component and Part B (Activator) component which must be mixed together prior to use.

The entire contents of the Part B (Activator) should be added to the Part A (Base) container and mixed using a mechanical paddle mixer until a uniform colour is achieved. Care should be taken to ensure that no unmixed material remains around the edges and bottom of the container. A typical mixing set up would be a 5" (127mm) spiral paddle mixer on a 750 watt drill, in which case the mixing should be completed after about 2-3 minutes.

The mixed product must be used within 1 hour of mixing at 20°C.

Applying the System

Scotchkote Urethane Roof Coating SD 650 should not be applied when rain is falling or when rain is imminent, surfaces must be free of visible moisture.

Scotchkote Urethane Roof Coating SD 650 is a two coat system, it is formulated with contrasting Part A (Base) and Part B (Activator) colours to enable the user to clearly identify when the product has been mixed thoroughly. Additionally the first coat should be a different shade to the final coat to aid application and the correct coverage. The minimum overcoating interval will depend upon the roof temperature and drying conditions but is typically 2 hours. Provided the surface is clean there is no maximum overcoating time.

Packaging and Storage

Scotchkote Urethane Roof Coating SD 650 - Supplied in 10 litre pack size.
Scotchkote Urethane Roof Detailing Compound SDR 655 - Supplied in 2 litre pack size.

3M™ 1900 Duct Tape - Supplied in 50m x 75mm (159ft x 3") roll.

Use all items within 12 months of date of manufacture.

Store liquids in original sealed containers at temperatures between 5°C and 32°C.



3M™ Scotchkote™ Roofing is a full manufacturer member of the Liquid Roofing and Waterproofing Association



3M™ Scotchkote™ Roofing Membrane clauses can be found in Section J43 of National Building Specification Plus (NBS)

For further information on this revolutionary new roofing system please get in touch with us on **0845 6028083** or visit us at www.3m.co.uk/samedayroof



Infrastructure Protection Division 3M United Kingdom plc

23 Standard Way Business Park
Northallerton
North Yorkshire DL6 2XA
Telephone: +44 (0)845 6028083
Facsimile: +44 (0)1609 783762 (Orders)
+44 (0)1609 788707 (Sales)
Email: roofing.cpp.uk@mmm.com
Website: www.3m.co.uk/scotchkote

Infrastructure Protection Division 3M Ireland Limited

The Iveagh Building
The Park, Carrickmines
DUBLIN 18
Telephone: +353 (0) 1 2803555
Facsimile: +353 (0) 1 2803509

Website: www.3m.ie

Please recycle. Printed in the United Kingdom.
© 3M 2012. All rights reserved.